

AMTA – Illinois

Annual Review 2005

Record Attendance at the 2005 Chapter Annual Meeting!

May 15, 2005 Chapter Annual Meeting at the Hyatt Rosemont drew 279 attendees.



Inside . . .

- 2005 Accomplishments
- 2005 Membership and Financial Reports
- A Look Ahead to 2006

2005 Illinois Chapter Leadership

Board of Directors

President	Patricia Benjamin
1 st Vice President	Angela Palmier
2 nd Vice President	Dylan Lott
3 rd Vice President	Jerry Blackburn
Member-at-Large	Donna Schiller
Member-at-Large	Christopher Alvarado

Committee Chairs

Communications	Jane Neumann
Gov. Relations	Tracy Smodilla
Education	Donna Schiller
Membership	Angela Palmier
Awards	Patricia Benjamin

Delegates to The National Convention

Patrick Malone	Camille Matuszewski
Maureen Mulhall	Paul Naujokas
Tracy Smodilla	



. . . working for you.



2005 Chapter Accomplishments

2005 was a banner year for the AMTA-Illinois Chapter. We saw significant growth in membership, experienced our first year as a licensed profession in Illinois, and had our largest Annual Meeting ever! Here are some our other accomplishments during 2005.

Communicating with Members

- *In Touch* newsletter published quarterly
- www.amta-il.org website updated regularly
- Chapter office to call for information (630)980-4740

Building Community

- **Annual Meeting** in May 2005 at Hyatt Rosemont
- **IL Chapter Members Breakfast** at the National Convention in Albuquerque



Providing Continuing Education

- **Medications and Massage** with Jean Wible, author of *Pharmacology for Massage Therapy*
- **Massage for People with Special Needs** with Michael Regina Whitley

Maintaining Government Relations

- **Massage Licensing Act and Rules of Practice** booklet revised
- **“Teach-in”** to help schools navigate the new license application process
- **Massage Therapy Awareness Day** in Springfield
- **Chapter lobbyist** in Springfield to monitor legislation

Recognizing Contributions

- **2005 Meritorious Award** – Jane Neumann of Evanston, IL
- **Special Government Relations Award** – Jerry Blackburn, Sue Gibson, Cindy Groening, Dennis Hill, Sheryl Hinchcliff, Michael Hovi, Allison Ishman, Maureen Mulhall, Jane Neumann, Eric Nyman, Jen Rada
- **Distinguished Service Award** – Sara Corkery, former *In Touch* newsletter editor
- **Humanitarian Award** – Thousand Waves Spa, Stress Management Program for Women with Cancer

Giving Back

- \$3,237 to Massage Therapy Foundation’s “Dollar-a-Member” campaign
- \$3,237 to AMTA Hurricane Katrina Relief Fund for members

Developing Leadership

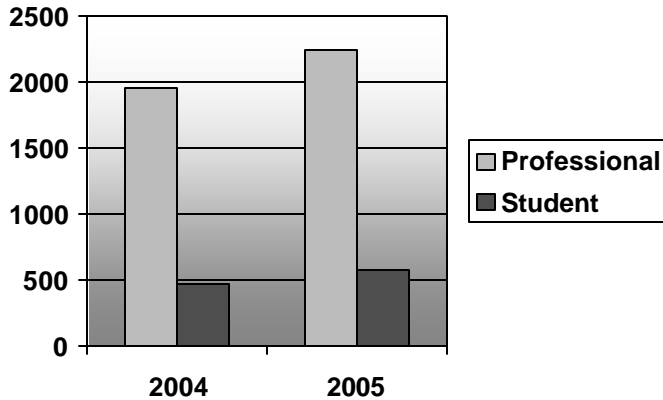
- CVOP – Chapter Volunteer Orientation Training
- AMTA Convention in Albuquerque, NM – Chapter Officers and Delegates
- Highlighting Massage Therapy in CAM Research Conference in Albuquerque, NM – Chapter Delegation



2005 Membership and Financial



2005 Membership Growth



AMTA Illinois Chapter professional membership grew from **1962** in 2004 to **2251** at the end of 2005.

Student membership blossomed from **465** to **569** within that same time period.

Combined, total membership in the IL chapter grew from **2427** to **2820** – an increase of **8.6%**!

2005 Financial Statement

Actual Income

Chapter Dues/Fees	\$ 174,281.00
Workshops/Education	\$ 9,050.00
Miscellaneous	\$ 1,249.00
Interest	\$ 369.81

Total \$ 184,949.81

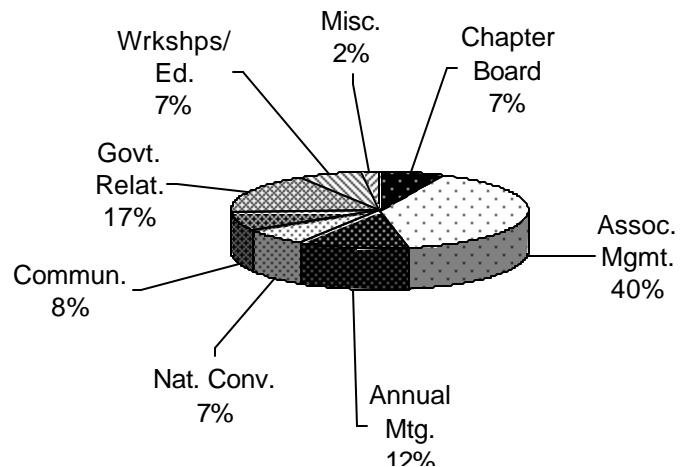
Actual Expenses

Association Management	\$ 70,054.22
Chapter Board	\$ 12,329.53
Annual Chapter Meeting	\$ 21,759.16
National Convention	\$ 12,371.66
Communications	\$ 14,147.30
Government Relations	\$ 29,903.05
Workshops/Education	\$ 11,901.90
Miscellaneous	\$ 3,626.00

Total \$ 176,092.82

2005 Total Net Income \$ 8,856.99

2005 Actual Expenses by Percent





Looking Ahead to 2006

The 2006 fiscal year for the AMTA - Illinois Chapter runs from March 1, 2006 to February 28, 2007. At the Strategic Planning Meeting on January 14-15th 2006, IL Chapter officers and committee chairs reaffirmed the mission of the AMTA Illinois Chapter:

... To serve AMTA Illinois Chapter members while advancing the art, science and practice of massage therapy in the State of Illinois.

To that end, the Illinois chapter board identified seven key areas of focus for planning and implementation in the coming year:

1. **Community Building** – to foster collegial relationships among chapter members.
2. **Information Dissemination** – to keep the membership abreast of news, information, and developments that may effect their profession and livelihood.
3. **Professional Development** – to assist members in acquiring the skills and knowledge to meet licensing and certification requirements, and to maintain the highest professional standards.
4. **Member Advocacy** – to represent the members best interests to the State, the AMTA and the general public.
5. **Public Awareness and Education** – to be a conduit for information regarding the profession of massage therapy to other health professions and the general public.
6. **Service** – to foster a regard for and involvement in service to the profession and to the larger community.
7. **Leadership Development** – to provide opportunities for members to develop leadership skills for service to the Association, the profession, and the community.

2006 Proposed Budget

Projected Income

Chapter Dues/Fees*	\$ 176,050.00
Workshops/Education	\$ 17,180.00
Miscellaneous	\$ 1,200.00
Interest	\$ 1,000.00

Total **\$ 195,430.00**

*A vote will be taken at the Annual Business Meeting on May 20 regarding chapter dues. The Board recommends that dues remain at their current rate of \$30.

Projected Expenses

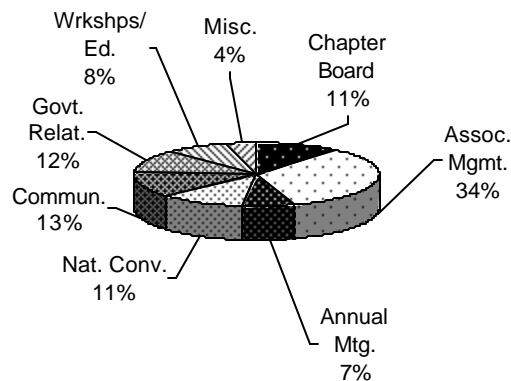
Association Management	\$ 76,083.00
Chapter Board	\$ 24,794.88
Annual Chapter Meeting	\$ 17,035.00
National Convention	\$ 24,717.00
Communications	\$ 30,052.40
Government Relations	\$ 28,220.00
Workshops/Education	\$ 17,920.00
Miscellaneous	\$ 8,349.50

Total **\$ 227,171.78**

2005 Total Net Income (\$31,741.78)

American Massage Therapy Association - Illinois Chapter
140 North Bloomingdale Road Bloomingdale, Illinois 60108-1017
630.980.4740 fax 630.351.8490 info@amta-il.org
Copyright © 2006 American Massage Therapy Association of Illinois (AMTA-IL)

2006 Projected Expenses by Percent



Current chapter reserves will be used to offset expenses for the coming year. This is intended to reduce reserve funds to a level more appropriate for a non-profit organization, while continuing to upgrade and improve member programs and services.

